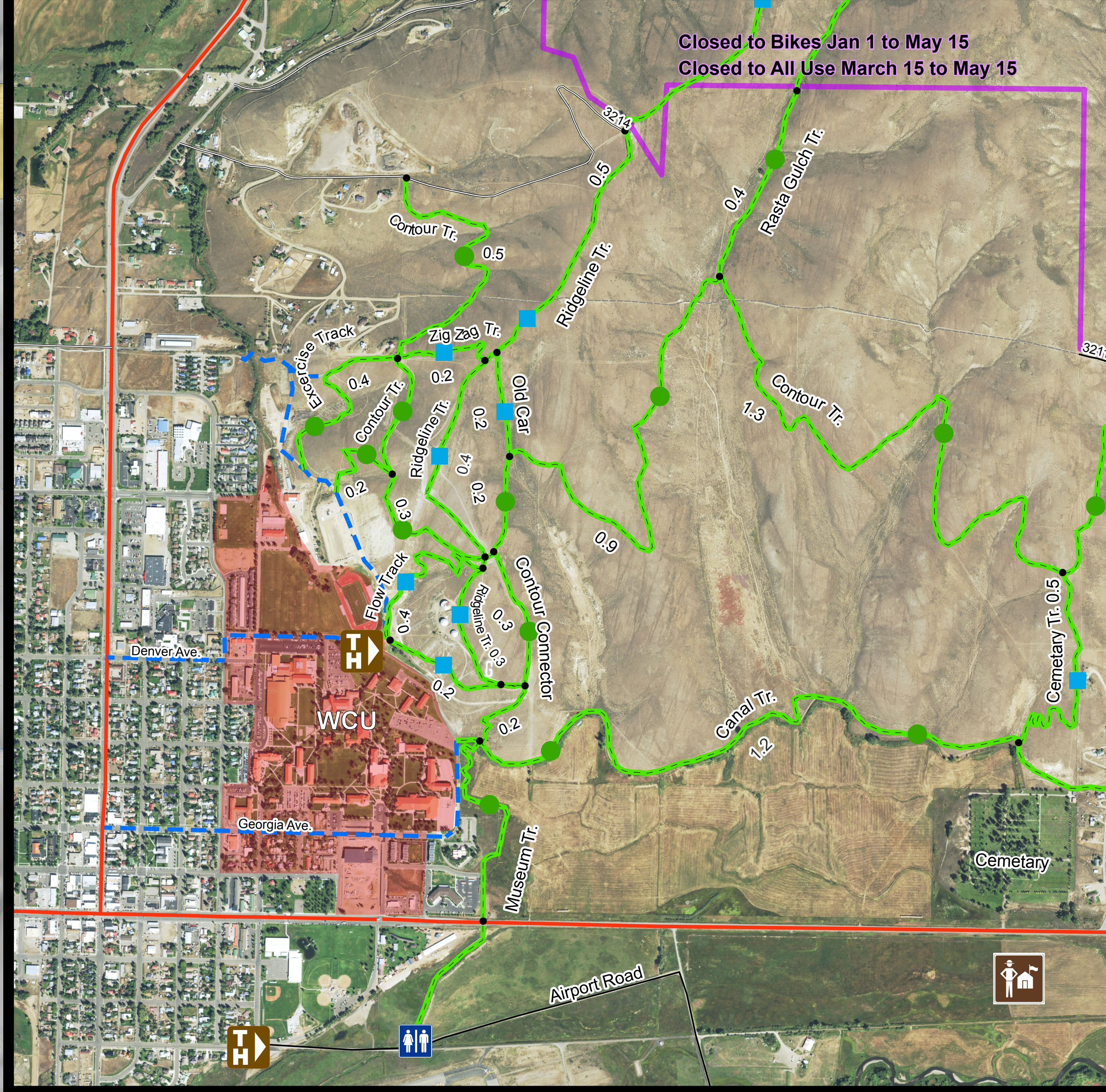




Signal Peak Trail System



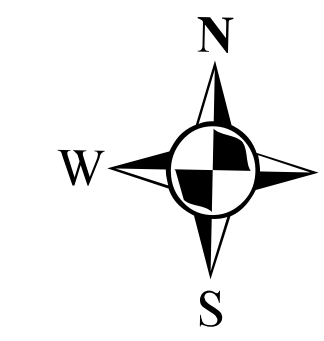
Campus Trails- Open to Allowable Uses When Dry



DAY USE ONLY/NO OVERNIGHT CAMPING WITHIN THE SIGNAL PEAK TRAIL SYSTEM

Seasonal Use Restrictions

- Area Closure for Gunnison Sage-grouse Conservation (March 15-May 15)
- Use Restrictions Apply for Wintering Wildlife and Gunnison Sage-grouse Conservation (January 1-May 15)*



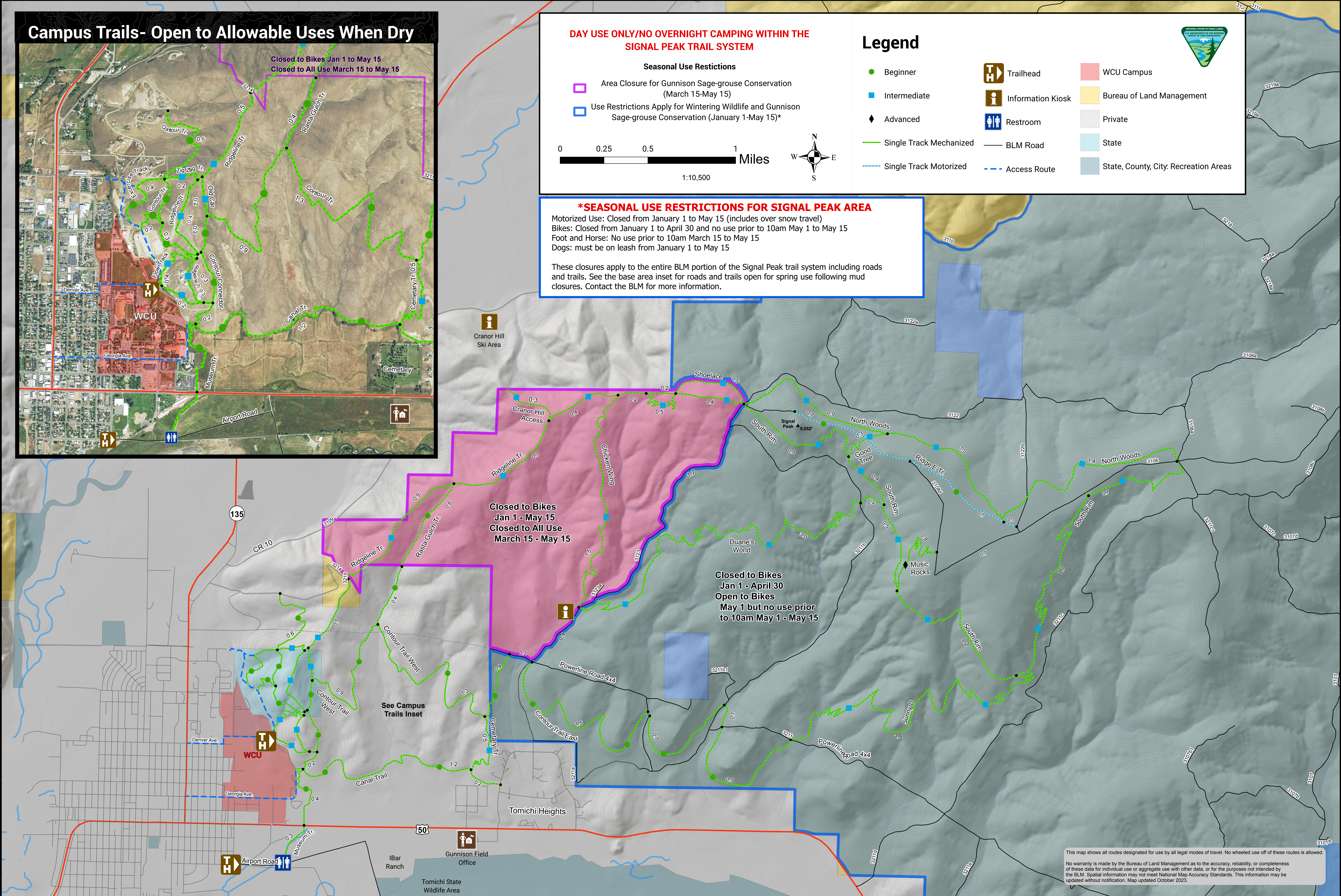
Legend

- Beginner
- Intermediate
- Advanced
- Single Track Mechanized
- Single Track Motorized
- Trailhead
- Information Kiosk
- Restroom
- BLM Road
- Access Route
- WCU Campus
- Bureau of Land Management
- Private
- State
- State, County, City: Recreation Areas

*SEASONAL USE RESTRICTIONS FOR SIGNAL PEAK AREA

- Motorized Use: Closed from January 1 to May 15 (includes over snow travel)
- Bikes: Closed from January 1 to April 30 and no use prior to 10am May 1 to May 15
- Foot and Horse: No use prior to 10am March 15 to May 15
- Dogs: must be on leash from January 1 to May 15

These closures apply to the entire BLM portion of the Signal Peak trail system including roads and trails. See the base area inset for roads and trails open for spring use following mud closures. Contact the BLM for more information.



This map shows all routes designated for use by all legal modes of travel. No wheeled use off of these routes is allowed. No warranty is made by the Bureau of Land Management as to the accuracy, reliability, or completeness of these data for individual use or aggregate use with other data, or for the purposes not intended by the BLM. Spatial information may not meet National Map Accuracy Standards. This information may be updated without notification. Map updated October 2023.