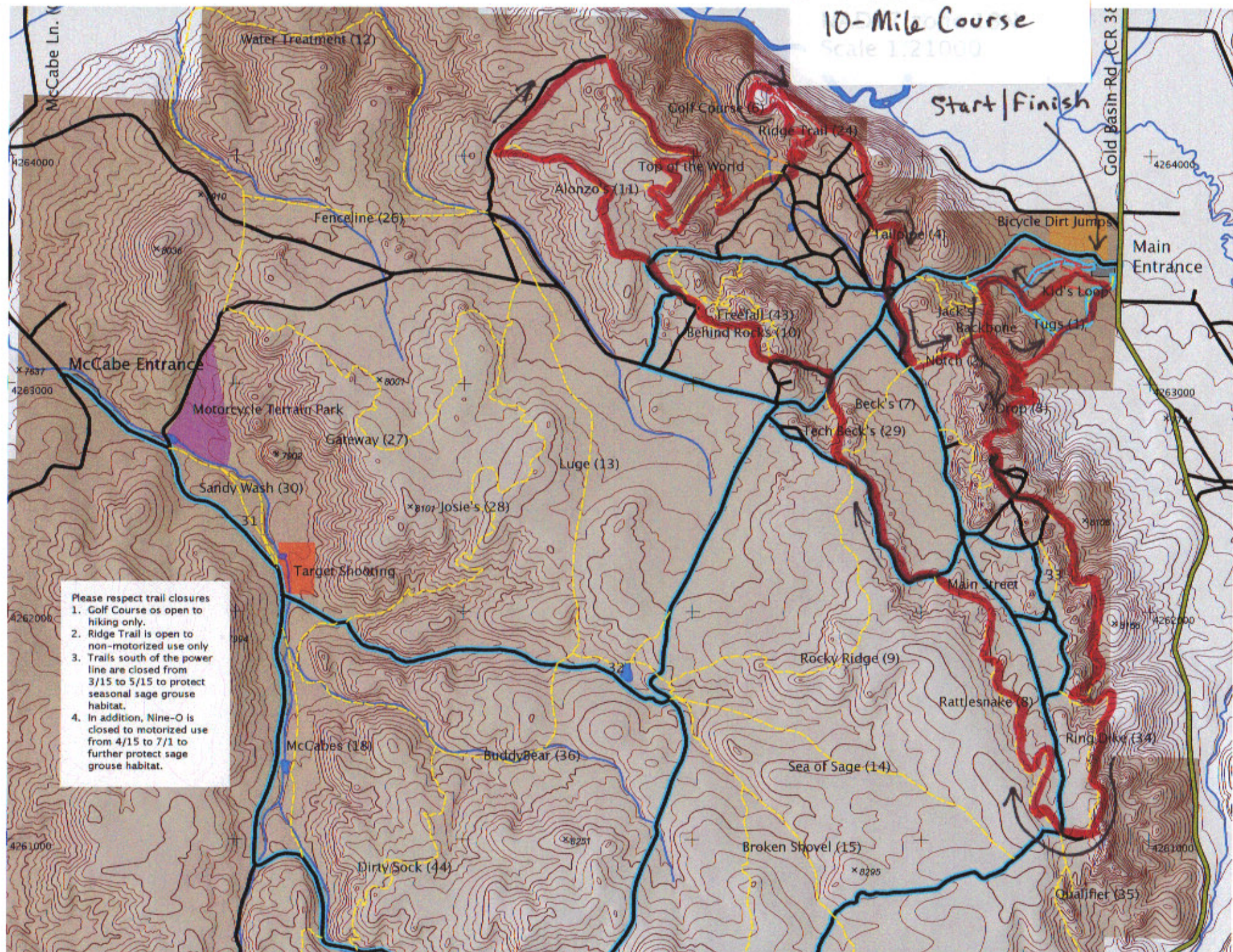


2011 Pammeler's Butt 10-Mile Course

Scale 1:21000



Please respect trail closures

1. Golf Course is open to hiking only.
2. Ridge Trail is open to non-motorized use only
3. Trails south of the power line are closed from 3/15 to 5/15 to protect seasonal sage grouse habitat.
4. In addition, Nine-O is closed to motorized use from 4/15 to 7/1 to further protect sage grouse habitat.